



BLA boost unit

*Catalogue HY17-8224/UK
November 2004*



Contents	Page
General information	3
Description	3
Oil cooling	3
Filter	4
Boost unit selection	4
Boost pressure	5
Installation	5
Line connection	6
Reservoir	6
Valves	6
Ordering information	6
Available versions	6
Filter cartridges	6
Installation dimensions	7

 **WARNING**

FAILURE OR IMPROPER SELECTION OR IMPROPER USE OF THE PRODUCTS AND/OR SYSTEMS DESCRIBED HEREIN OR RELATED ITEMS CAN CAUSE DEATH, PERSONAL INJURY AND PROPERTY DAMAGE.

This document and other information from Parker Hannifin Corporation, its subsidiaries and authorized distributors provide product and/or system options for further investigation by users having technical expertise. It is important that you analyze all aspects of your application, including consequences of any failure, and review the information concerning the product or system in the current product catalogue. Due to the variety of operating conditions and applications for these products or systems, the user, through its own analysis and testing, is solely responsible for making the final selection of the products and systems and assuring that all performance, safety and warning requirements of the application are met.

The products described herein, including without limitation, product features, specifications, designs, availability and pricing, are subject to change by Parker Hannifin Corporation and its subsidiaries at any time without notice.

Offer of Sale

Please contact your Parker representation for a detailed "Offer of Sale".

The BLA boost unit simplifies the building of closed or semi-closed hydrostatic transmissions.

Main features are:

- Replaces conventional charge pump and corresponding valves in many applications
- Allows pump speeds above normal selfpriming speed.
- Suitable for system flow rates to 400 l/min
- Includes filter
- Simple construction - no moving/wear parts
- Cost-effective installation
- Small tank size
- Helps in building a low-cost hydrostatic transmission.

Typical applications:

- Fan drives
- Propeller drives
- Generator drives
- Pump drives.

Description

In a closed circuit hydrostatic transmission, a charge pump is normally included with the main pump, providing make-up fluid which replaces pump and motor volumetric losses. It also maintains sufficient pump inlet pressure to avoid cavitation.

The BLA boost unit replaces the charge pump in many applications, when the following conditions are met:

- The max-to-min pump flow ratio does not exceed 2:1
- System pressure changes gradually without frequent and pronounced pressure peaks
- The line length between pump and boost unit is relatively short.

There are two basic sizes of the BLA boost unit:

- BLA 4 (to 160 l/min pump flow)
- BLA 6 (to 400 l/min).

The main part of the unit is an aluminium housing with a built-in nozzle and an injector; refer to the cross section to the right.

When fluid flows from the motor outlet port through the unit and to the pump inlet port, the increased fluid velocity between the nozzle and injector creates a low pressure zone causing additional fluid to be drawn from tank into the main circuit.

Also, pressure increases after the injector, allowing the pump to be operated at speeds higher than the self-priming speed. The 'boost pressure' increases with flow as shown in the diagrams (fig. 4, page 5).

The housing includes ports that should be connected to the pump and motor drain ports respectively.

An additional bleed-off nozzle diverts approx. 10% of the main flow through the cartridge filter before being directed to the tank.

Oil cooling

An oil cooler is usually required in the hydraulic system, in order to remove the heat that is generated in the main circuit. A full-flow oil cooler should be installed in the return line between the motor and the boost unit; refer to fig. 3, page 4.

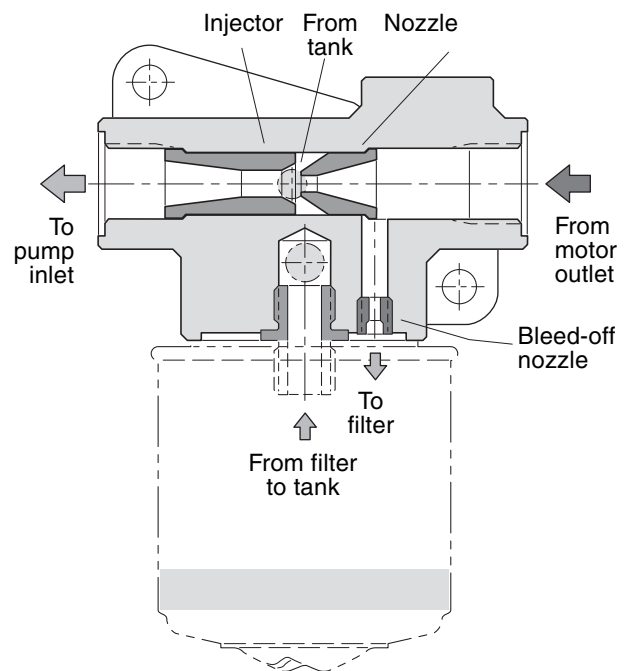


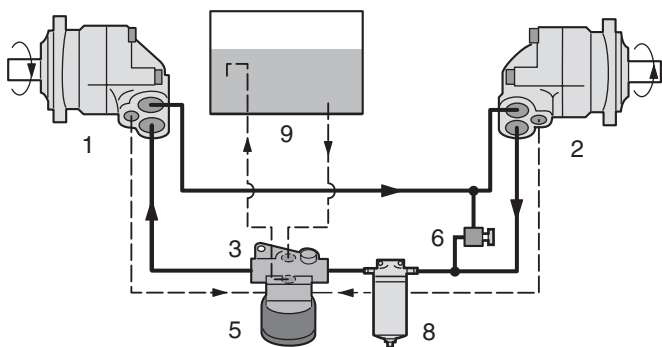
Fig. 1. BLA boost unit cross section.

Filter

The BLA boost unit is supplied with a standard spin-on cartridge filter. The paper insert provides a 20 µm nominal filtration (³ 50 µm absolute filtration).

Cartridges are available as spare parts (page 6).

For continuous operation, an additional full-flow return filter is usually required. It should be installed upstream of the BLA unit; refer to the top schematic to the right.



- | | |
|--|-------------------------------------|
| 1. Pump | 5. Filter cartridge |
| 2. Motor | 6. Pressure relief valve |
| 3. Boost unit (with injector and nozzle) | 8. Full-flow filter (when required) |
| | 9. Reservoir |

Fig. 2. Boost unit installation (example).

Boost unit selection

The BLA 4 is available in four sizes with a max recommended flow of 40, 63, 100, and 160 l/min. A filter is included.

The BLA 6 is available in the following sizes: 250, 350 and 400 l/min; it also includes a filter.

Example

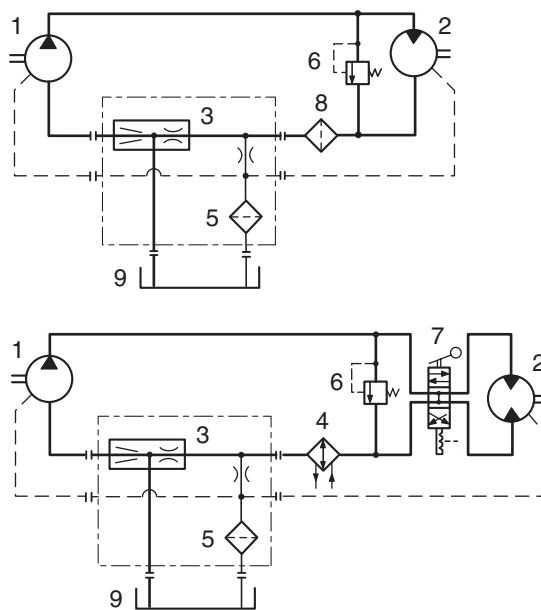
Select a suitable boost unit for a closed loop hydrostatic transmission that utilizes an F11-19 pump at 4000 rpm; nominal flow is approx. 76 l/min.

According to the F11/F12 brochure, the required inlet pressure for an F11-19, operating as a pump at 4000 rpm, is 0.9 bar absolute.

The BLA 4-100 is selected (refer to the middle diagram, fig. 4). It will supply about 1.7 bar boost pressure at approx. 76 l/min, providing a margin for line losses between the boost unit and the pump.

NOTE: The boost pressure (after the unit) is approx. half the pressure before the unit.

As an example, the up-stream pressure of a BLA 4-100 at max. flow (100 l/min) is about 6.5 bar.



- | | |
|--|-------------------------------------|
| 1. Pump | 6. Pressure relief valve |
| 2. Motor | 7. Directional control valve |
| 3. Boost unit (with injector and nozzle) | 8. Full-flow filter (when required) |
| 4. Oil cooler (when required) | 9. Reservoir |
| 5. Filter cartridge | |

Fig. 3. Circuit schematics (examples).

Boost pressure

The diagrams in fig. 4 show max outlet pressure versus flow through the various boost units. The pressure increase obtained at higher flows usually corresponds to the additional pump inlet pressure required at elevated shaft speeds.

To avoid pump cavitation, the boost unit should be installed as close to the pump as possible. The pressure at the pump inlet must not, under any operating condition, drop below the required pressure at a particular pump speed.

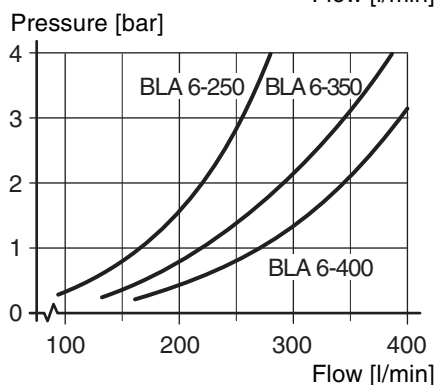
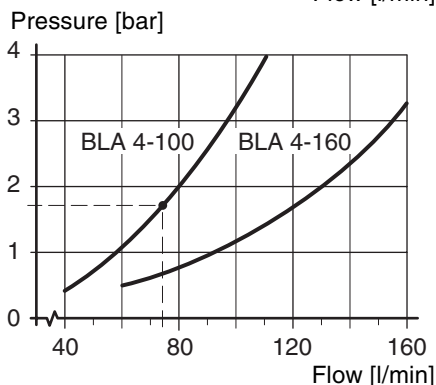
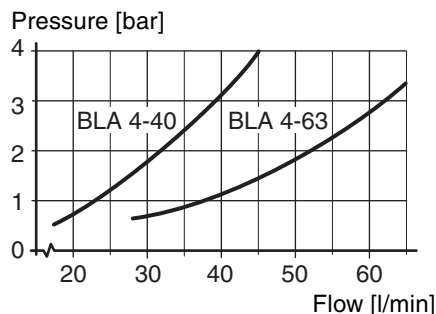


Fig. 4. BLA pressure/flow diagrams.

Installation

For proper functioning, the boost unit must be installed well below the lowest oil level in the reservoir.

The BLA can either be bolted directly to the reservoir side wall as shown below or connected separately with piping or hoses.

An adapter plate, with mounting face and hole pattern corresponding to that of the boost unit housing, should be fabricated and welded in place. The sealing is accomplished with seal washers.

The filtered oil flow from the boost unit must enter the reservoir as far away as possible from the inlet, and the pipe must always be well below the lowest oil level.

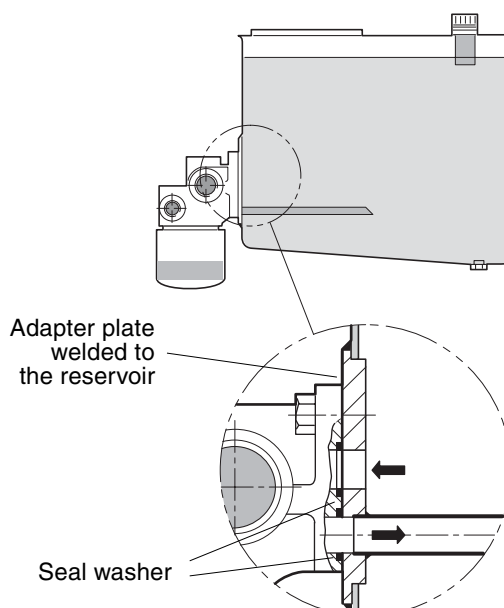


Fig. 5. Boost unit/reservoir installation (example).

Line connection

When the boost unit is connected to the reservoir with piping or hoses, line length should not exceed 0.5 m, and the inner diameter should equal or exceed 13 mm (1/2").

To avoid large pressure losses between the boost unit and the pump inlet, the line should be as straight as possible, not to exceed 0.5 m in length.

The recommended, minimum inner diameter of the line is shown in the following table.

BLA 4 size	Inner dia. [mm]	BLA 6 size	Inner dia. [mm]
-40	13	-250	32
-63	20	-350	38
-100	20	-400	38
-160	25		

Reservoir

The reservoir should be large enough to allow the oil to be turned over in 1.5 to 2 min. The oil will then be sufficiently de-aerated. The size of the reservoir normally corresponds to 15-20 % of the pump flow.

As an example, a pump flow of 75 l/min requires a reservoir of 10 to 15 l.

Valves

A system pressure relief valve or directional control valve should be connected as shown in figure 3 (page 4).

The valve return must be connected to the boost unit inlet (**not** directly to the reservoir).

NOTE: The drain lines from the pump and the motor are also connected to the boost unit; refer to the schematics and installation drawings on page 4.

Ordering information

Example: **BLA 6 - 250**

Type: BLA 4 or 6
 Size: BLA 4: **40, 63, 100 or 160**
 BLA 6: **250, 350 or 400**

Available versions

Version	Part no.
BLA 4-40	73 186
BLA 4-40-X*	379 7824
BLA 4-63	73 061
BLA 4-100	73062
BLA 4-160	73 159
BLA 6-250	73 311
BLA 6-350	370 1097
BLA 6-400	73 312

* X - Bleed-off nozzle plugged; BLA 4

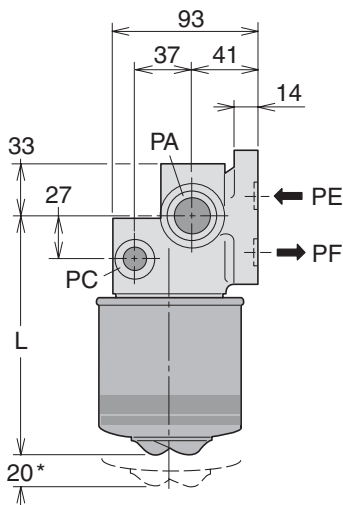
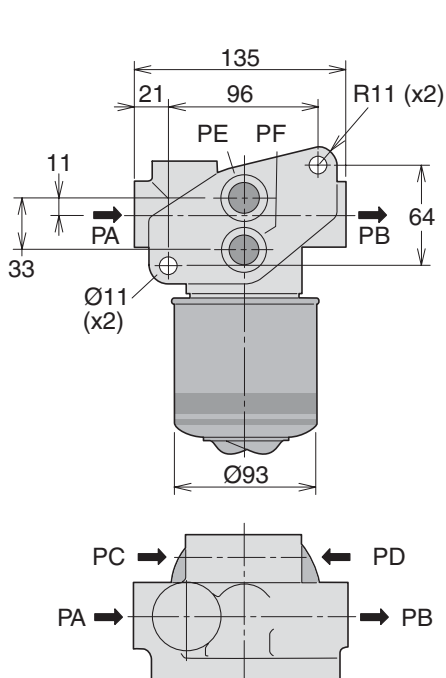
Filter cartridges

Version	Part no.
BLA 4-40, -63, -100	351 7857
BLA 4-160	73 194
BLA 6-250	73 308
BLA 6-350, -400	73 309

Seal washers (for ports PE and PF)

Version	Part no.	Washer size
BLA 4 (all)	943 908	1/2"
BLA 6-250	944 252	3/4"
BLA 6-350, -400	944 498	1"

BLA 4



* Additional space required for filter replacement

Port sizes (all are BSP)

Port	BLA 4	BLA 6	Description
PA	3/4"	1 1/4"	From motor outlet
PB	3/4"	1 1/4"	To pump inlet
PC	3/8"	3/4"	From pump and motor drain ports
PD	3/8"	3/4"	
PE1)	1/2"	1"	From reservoir
PF1)	1/2"	3/4"	Return to reservoir
PG	1/2"	3/4"	To cooler
PH	1/2"	3/4"	From cooler

1) Countersunk to accept seal washer:
 PE: BLA4 – ϕ 29x2.4; BLA6 – ϕ 44x2.9
 PF: BLA4 – ϕ 29x2.4; BLA6 – ϕ 36x2.4.

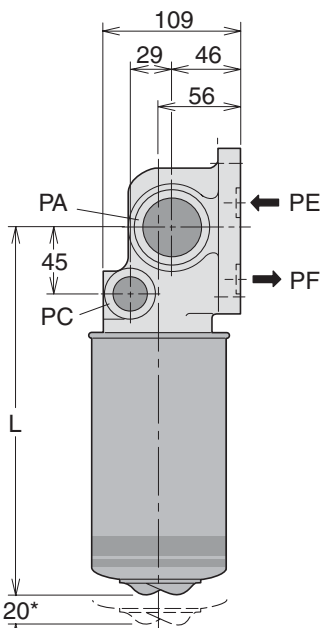
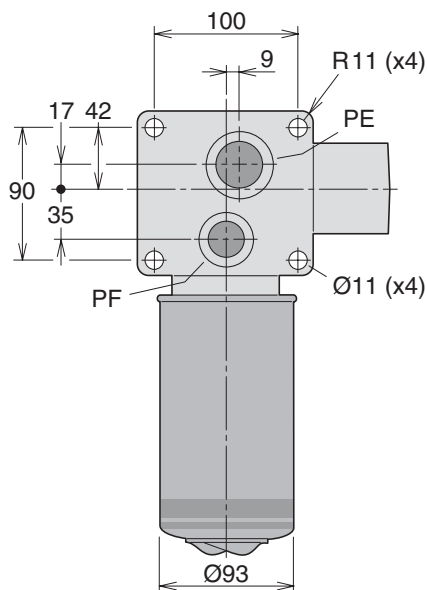
Weight

BLA size	Weight [kg]
4-40, -63, -100	1.9
4-160	2.1
6-250	3.1
6-350, 400	3.2

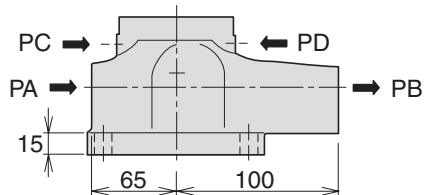
Dimension L

BLA size	L [mm]
4-40, -63, -100	153
4-160	203
6-250	250
6-350, -400	301

BLA 6



* Additional space required for filter replacement



Hydraulics Group Sales Offices

Europe

Austria

Wiener Neustadt
Tel: +43 (0)2622 23501
Fax: +43 (0)2622 66212

Belgium

Nivelles
Tel: +32 (0)67 280 900
Fax: +32 (0)67 280 999

Czech Republic

Klecany
Tel: +420 284 083 111
Fax: +420 284 083 112

Denmark

Ballerup
Tel: +45 4356 0400
Fax: +45 4373 8431

Finland

Vantaa
Tel: +358 (0)9 4767 31
Fax: +358 (0)9 4767 3200

France

Contamine-sur-Arve
Tel: +33 (0)450 25 80 25
Fax: +33 (0)450 03 67 37

Germany

Kaarst
Tel: +49 (0)2131 4016 0
Fax: +49 (0)2131 4016 9199

Hungary

Budapest
Tel: +36 (06)1 220 4155
Fax: +36 (06)1 422 1525

Ireland

Dublin
Tel: +353 (0)1 293 9999
Fax: +353 (0)1 293 9900

Italy

Corsico (MI)
Tel: +39 02 45 19 21
Fax: +39 02 4 47 93 40

The Netherlands

Oldenzaal
Tel: +31 (0)541 585000
Fax: +31 (0)541 585459

Norway

Ski
Tel: +47 64 91 10 00
Fax: +47 64 91 10 90

Poland

Warsaw
Tel: +48 (0)22 863 49 42
Fax: +48 (0)22 863 49 44

Portugal

Leca da Palmeira
Tel: +351 22 9997 360
Fax: +351 22 9961 527

Slovakia

Ref. Czech Republic

Spain

Madrid
Tel: +34 91 675 73 00
Fax: +34 91 675 77 11

Sweden

Spånga
Tel: +46 (0)8 597 950 00
Fax: +46 (0)8 597 951 10

Turkey

Merter/Istanbul
Tel.: +90 212 482 91 06 or 07
Fax: +90 212 482 91 10

United Kingdom

Warwick
Tel: +44 (0)1926 317 878
Fax: +44 (0)1926 317 855

International

Australia

Castle Hill
Tel: +61 (0)2-9634 7777
Fax: +61 (0)2-9899 6184

Canada

Milton, Ontario
Tel: +1 905-693-3000
Fax: +1 905-876-0788

China

Beijing
Tel: +86 10 6561 0520
Fax: +86 10 6561 0526

Asia Pacific Group

Hong Kong, Kowloon
Tel: +852 2428 8008
Fax: +852 2425 6896

India

Mumbai
Tel: +91 22 7907081
Fax: +91 22 7907080

Japan

Tokyo
Tel: +(81) 3 6408 3900
Fax: +(81) 3 5449 7201

Latin America Group

Brazil
Tel: +55 12 3954-5100
Fax: +55 12 3954-5266

South Africa

Kempton Park
Tel: +27 (0)11-961 0700
Fax: +27 (0)11-392 7213

USA

Cleveland (industrial)
Tel: +1 216-896-3000
Fax: +1 216-896-4031
Lincolnshire (mobile)
Tel: +1 847-821-1500
Fax: +1 847-821-7600

Parker Hannifin is the world's premier supplier of motion and control systems and solutions, with sales and manufacturing facilities throughout the world. For product information and details of your nearest Parker sales office, visit us at www.parker.com or call free on 00800 2727 5374.



Catalogue HY17-8224/UK
PDF 11/04

© Copyright 2004
Parker Hannifin Corporation
All rights reserved.